

System Requirements

Please review the minimum requirements listed below and be certain that your system meets these requirements.

For D4COST to operate properly, your PC Compatible system should conform to the following requirements.

1. PC with Pentium or higher architecture.
2. A minimum of 128 MB RAM.
3. Windows NT, 2000, XP, 7 or higher.

Installing D4COST

NOTE: *If you are installing an update to a previous version of D4COST™ make sure that you **back up the data** in your current version before proceeding. DC&D Technologies, Inc., will not accept responsibility for data loss of a previously installed version. Backup all current versions data directories. Updates will only update a previous version (one version back), if you are updating an earlier version (further than one version behind) you will need to do a new installation.*

To install D4COST put the CD-ROM into your CD-ROM drive.

1. Go to RUN
2. Log on the CD-ROM Drive (X:\)
3. Double Click SETUP

You will be installing to a 32 bit operating system (Windows NT, 2000, XP, 7 or higher) select the setup.exe on the CD-ROM, double click to install the software. When prompted select Typical Installation.

If installing to a different drive or directory than the default install, you may need to go in and point to the data directory after the installation is completed.

To configure the path to the data directory, go to the “Control Panel”, on the Database Tab, map to the Data directory (clicking in the Path area then click the browse button that appears) located under D4COST by double clicking the directories until you open the data directory. The Data Directory is where your data files are located. Click Save and close the window. *The default path for XP or lower is "C:\Documents and Settings\All Users\Documents\D4Cost\Data"; Vista "C:\Users\Public\Public Documents\D4Cost\Data; Windows 7 "C:\Users\Public\Documents\D4Cost\Data.*

After you have installed the program wait for the image installer to launch (the screen will appear after you click Finish). When prompted install the images to your hard drive.

Please Note: If you do not want to install the images click Cancel and the installation will stop.

There are approximately 300MB of image files. Image files will load to your hard drive by the default because setup does not know where you will want to keep them.

If you have installed the images to an alternate location you will need to reset the image path. To set an alternate image path, open D4COST, close the project listed screen, then go to File/Options. On the “Alternate Image Path” browse to the path where you have installed the images. Example:

X:\D4cost\Images. *The default path is XP = “C:\Documents and Settings\All Users\Documents\D4Cost\Images”; Vista = “C:\Users\Public\Public Documents\D4Cost\Data; Windows 7 = “C:\Users\Public\Documents\D4Cost\Data.*

After finishing the installation you will need to call for a registration unlock code at 800-533-5680.

There will be a D4COST short cut located in your START menu. The registration screen will appear when opening D4COST.

Network Installation

A network installation of D4COST requires a minimum of a three-user license, which means that at least two additional user license must be purchased in addition to the stand-alone version. The License Agreement requires that an additional user network license be purchased for each machine (one license required for server is included), which is running the software. Site licenses are available. To inquire about site licenses call 800-533-5680 (from outside the USA call 813-662-6830).

The most common network installation on peer to peer, NT and Novell networks will access the Data Directory on the network server. The software may be installed on the server either at the server (Recommended) or from a workstation **that will not be running D4COST**.

The server will require a “typical” installation.

In most network applications the workstations will have a “compact” installation. A compact installation is required on each machine running D4COST. Install the compact to the workstation hard drive “root directory”.

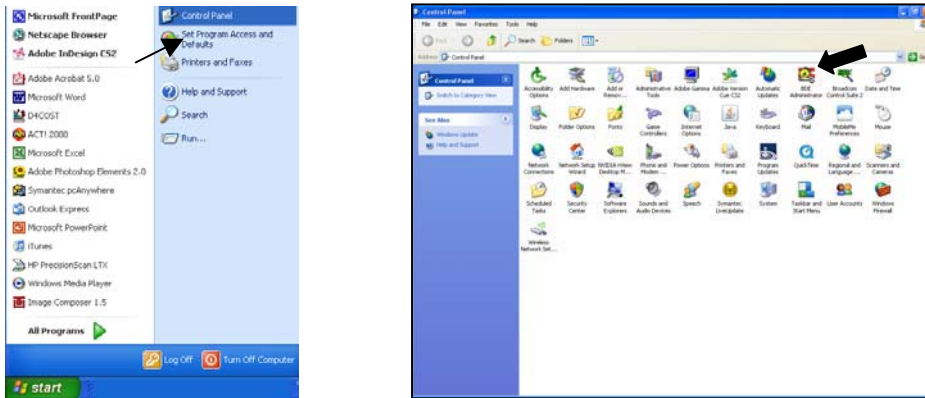
Network Install Procedure

For installation of D4COST to a network follow these instructions:

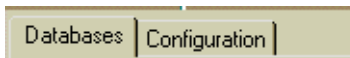
1. D4COST may be installed at the server or from a workstation **that will not be running D4COST (If your can not install at the server and an extra workstation is unavailable to install D4COST, you will need to copy all files except for the Image folder from the CD-ROM to a temp folder on the server and install from the server).**
2. Select a **TYPICAL** install to the network server to install D4COST and the images (approximately 360MB). This will setup the databases, the image, file Attachment folders and the executable files necessary to run the software.
3. The first destination window is for the program files. After you direct the install to your server location click next. This is the destination window for the database needed to operate D4COST. Place the database in the same location as your program files on the server.
4. The directory where you install the software program files and database on the server must have full **SHARED/READ/WRITE/MODIFY permissions** for all users that will be accessing D4COST.
5. A **COMPACT** install is required on each workstation that will be accessing D4COST. The compact installs the program files and sets up the Borland Database Engine on the C:\drive, which establishes the paths for the network directories. After the compact install is complete you need to point to the data directory manually (see page 5). D4COST will not open on the workstations if the paths are not properly pointed. If you get the message: “Error 42,” it means that your BDE is not pointing to the “Data” folder on your network. **NOTE: It is important to have all D4COST applications closed when installing any workstations.**
6. After the compact install is complete, you will need to map a drive to your server (it is recommended that each workstation using D4COST is mapped using the same drive letter). After you have mapped your drive go into the BDE ADMINISTRATOR located in the control panel. Manually point to the database by mapping the Database “Path” and the Configuration “NET DIR” to the /D4Cost/Data folder. (see page 5)
7. D4COST automatically installs a D4COST shortcut to the Windows START menu. Or go to “All Programs” “D4COST” and click the D4COST Icon to launch D4COST.

The compact install of D4COST sets up the Borland Database Engine and the BDE Administrator locally on your workstation. You will use this tool to point to your database. WAN users often have local databases and WAN databases. This handy BDE Utility allows you to redirect your D4COST pointers to other licensed and valid D4C databases.

To run the BDE utility, click START, CONTROL PANEL, BDE ADMINISTRATOR.

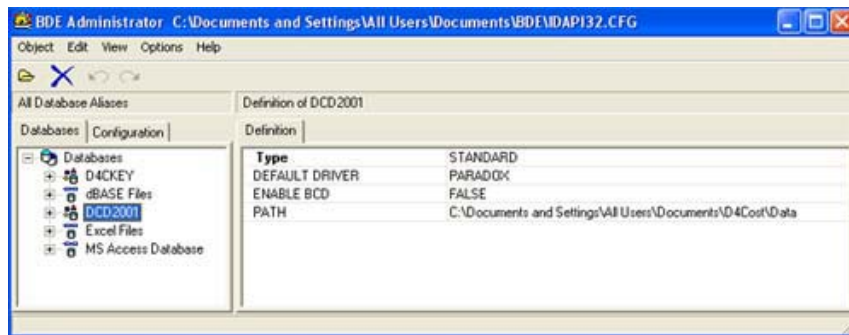


There are two tabs under the BDE Administrator. You will have to make two settings for the software to run properly.

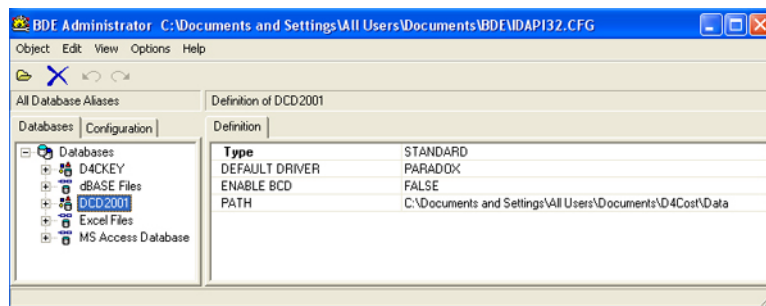


First Click the DATABASES tab. Click Databases. Click the DCD2001 (D4COST alias) and point the PATH located on the right to the /DATA folder wherever it is located on your network. You can access a browse window by clicking on the PATH line, which will create a browse button on the right. Click the browse button to map manually. *If the "DCD2001 does not exist, you will have to create one. To create a new alias right click on "Databases" and select new. A "Standard" window will appear. Click OK then rename the alias "DCD2001". The properties will appear on the right. click in the "Path" area and browse all the way to the "Data" directory.*

The default path is "C:\Documents and Settings\All Users\Documents\D4Cost\Data".



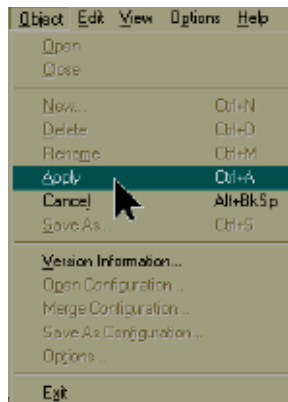
Second, Click the CONFIGURATION tab. Double Click Drivers, Native, Paradox, and point the NET DIR to the same /DATA folder that the databases tab was pointed to. They must match to operate properly.



D4COST recommends that you browse to the folders you are selecting by clicking into the rectangle to the right of Net Dir on the CONFIGURATION tab, and the rectangle to the right of PATH on the DATABASES tab, and in each instance clicking on the box to the far right with three dots which will allow you to browse to the DATA folder under D4COST. Browsing will ensure that the path is typed correctly.

Once you have pointed both the Path under the Databases tab and the Net Dir under the Configuration tab to the appropriate /D4COST/DATA folder located on your Server, click OBJECT (in the upper left hand corner), click APPLY to save all edits to the new configuration. Close the BDE and save all edits.

Special Note for Vista & Windows 7 Users: When editing the BDE you will need to run it as administrator to avoid the BDE from hanging. To do this go to Vista = "C:\Users\Public\Public Documents\BDE\ bdeadmin.exe; Windows 7 = "C:\Users\Public Documents\ BDE\ bdeadmin.exe. Then right click and select Run as Administrator then begin your edits shown above.



If the pointers are properly set to a data folder that has read/write privileges, the workstation should run properly when executing the D4COST.EXE.

For WAN installations D4COST recommends a typical install on the local workstation, and using the BDE ADMINISTRATOR to point to the database on the WAN. Installing the EXE locally will run executable commands at your workstation and will speed up networking, as the only data coming across the WAN will be database calls.

Note: If you ever plan to open D4COST.EXE locally on the server, it is advisable to run setup at the server. If you do not ever plan to run D4COST.EXE from the server (such as in Novell applications), it can be installed from a workstation that will not be running D4COST.

Images can be alternatively viewed from the CD-ROM as long as the startup CD-ROM is resident in a CD Drive that has been specified as an alternate image path has been set to read the CD-ROM/Images. To view images on the workstation, (see page 8). (This may be a different address on each workstation due to differences in drive path designations from workstation to workstation, as a path may be a virtual drive on one workstation and is designated as a different address on another workstation.)

In network installations only one activation code will be necessary. The software will be initialized the first time it is opened, either locally or from a workstation and thereafter will not require further initialization. *Please let the technician know when a network installation is being done to be sure the correct unlock settings occur.*

Network Installation Troubleshooting:

Network installation problems are almost always related to the fact that the Borland Database Engine on the workstation is not pointing to the D4COST data files, and/or that the BDE is not finding the pdoxusr.net file.

The software will not initialize on a workstation unless the network paths are correctly configured as to where the data and network files are located and the permissions have been properly set to full READ/WRITE.